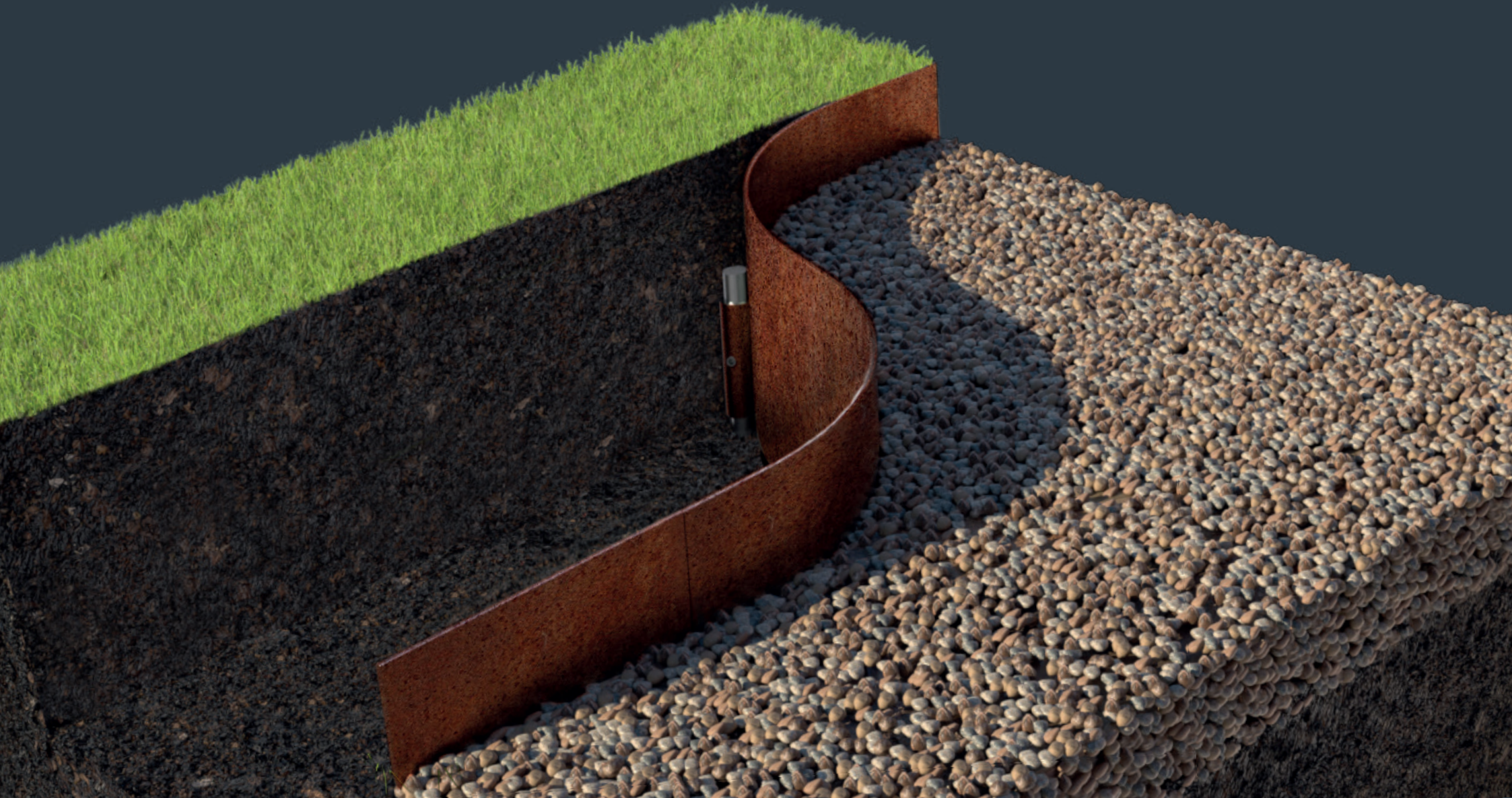


**CORE**Landscape<sup>®</sup>  
**P**roducts

**CORE DATUM EDGE** - Specification & Installation





# CORE DATUM EDGE

## Specification & Installation

### THE PRODUCT

CORE DATUM EDGE is a heavy-duty edging solution designed specifically for commercial landscaping projects, and landscaping contractors. This heavy duty edging offers a sleek and efficient way to define your projects, whilst also being used as a datum point. Its unique features make it ideal for tough ground conditions and demanding environments.



### USES

- ✓ Lawn Borders ..... Paving... Commercial Edging.... Driveways...

### TECHNICAL DATA

Edging Height	150mm
Length	2200mm Per Length
Thickness	3mm (6mm Available on Request)
Pack Quantity	2 Lengths (4.4 Metres Per Pack)
Fixings	480mm Spikes, Joining Plates, Grub Screws
Available Finish	Galvanised, Mild Steel or Corten
Recycled Content	Part Recycled / 100% Recyclable

### BENEFITS

- ✓ Concealed Fixing: The rear joining plates provide a clean front edge and flush top, ensuring continuous clean lines without visible fixtures, enhancing the overall aesthetic.
- ✓ No Preformed Spikes: This design ensures easy installation in tough ground conditions, allowing for versatile use across various projects.
- ✓ DatumLock™: Our patent-pending locking system allows for precise micro-adjustments of the edging height. By locking off against the provided pins, contractors can set out their sites accurately, pin to shape, and adjust the height as necessary, using the edging as a reliable datum point.



### Galvanised Steel

A cost effective solution, providing superior durability and corrosion resistance, with long-lasting performance. The galvanised coating protects the steel from rust and weather damage, ensuring the edging maintains its structural integrity and appearance over time.



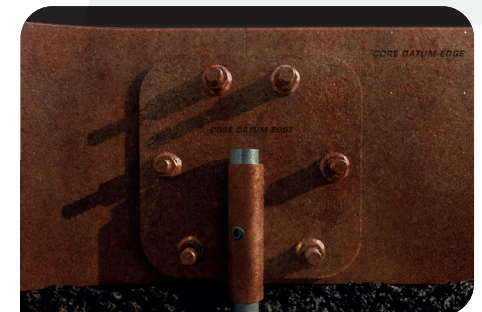
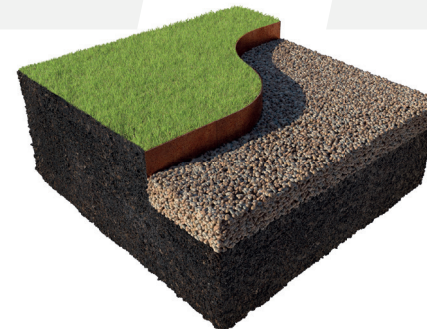
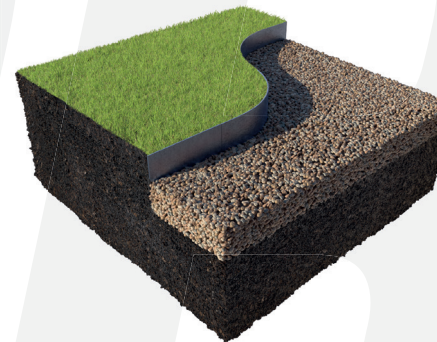
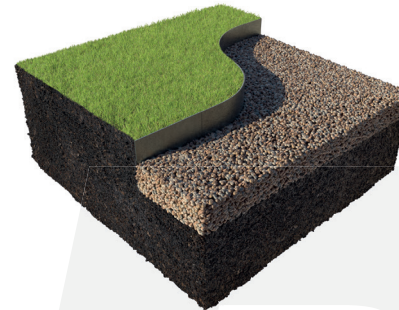
### Mild Steel

A versatile and cost-effective solution for various landscaping projects. Mild steel is known for its strength and flexibility, and will form a patina over time similar to Corten Steel.



### Corten Steel

For landscaping projects that seek both durability and distinctive aesthetics. Corten steel, also known as weathering steel, develops a stable rust-like appearance that acts as a protective layer, preventing further corrosion. This unique finish offers a striking, natural look that evolves over time, enhancing the visual appeal of any commercial landscaping project.



# CORE DATUM EDGE

## Specification & Installation

**CORE**Landscape<sup>®</sup>  
Products



Begin by clearing the site thoroughly and preparing the sub-base as necessary to ensure a stable foundation for the edging.



Place DATUM EDGE into the desired position. Use the ground pins provided to fix the edging into place, by inserting them through the welded tubes.



If you want to create a curve, use the ground pins to establish anchor points along the desired path. Make sure that the welded tubes are positioned on the least visible side to maintain a clean appearance.



Once the edging is in place, adjust the height by sliding the edging up or down on the pins. This allows you to create your datum, ensuring the edging is level and at the correct height. Once the desired height is achieved, lock it in place using the DatumLock™ screws.



Attach the next length of edging by aligning it with the previously installed section. Use the joining plates provided to connect the two sections securely. Continue this process, attaching and adjusting additional lengths as required.



The last step is to finish your surrounding surfaces or sub-base, and landscape as desired.



### Tools Required:

- String Line
- Tape Measure
- Hammer
- Block of Wood
- Impact Driver

### Fixings Included:

- 480mm Pins
- Joining Plates
- Attaching Bolts
- DatumLock™ Screws



### **Storage & Handling**

Our product is securely packed in a tailored single flute cardboard carton to ensure no movement of the product in transit, and each box is sealed with cross weave tape. Depending on the size/weight of the consignment, it may be palletised. We encourage customers to undertake an assessment of the health and safety risks involved in manual handling and take measures to reduce the risk of injury as far as reasonably practicable. Each person should be fully trained in manual handling techniques, and handling aids such as a trolley, forklift, pallet truck, or conveyor should be used if moving large volumes of cartons. Break up large consignments into more manageable loads and ensure that the product is stored at a reasonable height, avoiding the lifting of boxes from floor level or above shoulder height. Carrying distances of boxes should also be reduced.

### **PPE**

We recommend the use of personal protective equipment (PPE) when installing CORE DATUM EDGE, including good strong safety boots/shoes to protect the feet, strong gloves to protect the hands, and ear plugs or defenders if using loud cutting equipment.

### **Health & Safety**

To comply with Health and Safety Regulations 1981, all construction sites should have a first aid box with enough equipment to cope with the number of workers on site, an Appointed Person to take charge of first-aid arrangements, and a First-Aider who has undertaken training and holds an HSE approved qualification to administer first aid. The number of first-aiders will depend on the site, and information should be clearly displayed on site telling workers the name of the Appointed Person(s) or First Aider(s) and where to find them.

### **Fire Protection & Stability**

When galvanised, the steel is coated with a layer of zinc, which enhances its fire-resistant characteristics. The zinc coating acts as a barrier that provides some protection against the direct impact of flames and high temperatures.

Galvanised steel is less likely to ignite and has a higher melting point than mild steel, making it more resistant to heat. It also forms a protective layer of zinc oxide when exposed to fire, which can act as an insulating barrier, delaying the spread of flames and reducing the risk of structural failure.

### Environmental Credentials

Galvanised steel boasts several eco-friendly characteristics, making it a sustainable and responsible choice. With 100% recyclability, it can be easily repurposed, reducing the demand for new raw materials and minimizing waste. Its long-lasting nature and resistance to rust and corrosion result in fewer replacements, conserving resources and reducing maintenance needs. The galvanising process itself is energy-efficient, contributing to lower energy consumption and greenhouse gas emissions. Mild steel, also known as carbon steel, boasts several environmental credentials. It's highly recyclable, retaining its properties even after recycling, which reduces the need for new raw materials and minimizes energy consumption. Corten steel's durability and longevity minimize the need for frequent replacements, decreasing material consumption and waste. Additionally, its recyclability and potential for local sourcing further contribute to its sustainability.

### Further Information

Please do not hesitate to contact us to discuss your next project. For more information on the entire CORE product line please refer to the Knowledge Centre on our website. You can find all of your downloads, install videos and case studies at [www.corelp.co.uk](http://www.corelp.co.uk).



LANDSCAPE PRODUCTS  
THAT WON'T COST  
YOU THE EARTH



**CORE***Landscape*<sup>®</sup>  
*Products*  
build **beautiful** spaces

#BuildWithCORE

[sales@corelp.co.uk](mailto:sales@corelp.co.uk) | 0800 118 2278 | [corelp.co.uk](http://corelp.co.uk)