

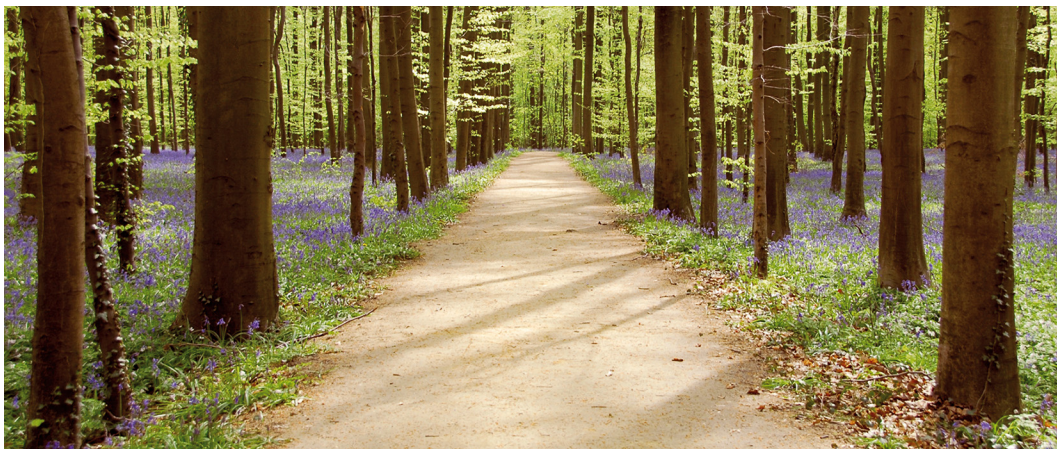


Goldpath[®]

The most cost effective solution
for the regeneration of footpaths,
bridleways, access paths , golf
courses and sports surfaces.



LONG RAKE SPAR
Specialist Decorative Aggregates



Goldpath provides a sympathetic, attractive rich golden surface, which is easy to lay and maintain. When rolled, it's natural setting properties bind the gravel together to provide a self compacted firm finished surface, which remains firmer under foot than conventional loose aggregate.

Goldpath's unique properties are suited to a wide spectrum of applications from domestic driveways, golf courses, sports surfaces and rural footpaths to large prestigious corporate and public sector projects that require a cost effective durable surface which is easy to lay and maintain.

Laying Method - 1 bulk bag covers approximately 8m² at 50mm and 4m² at 100mm.

Foundation - We recommend using an MOT Type 1 sub base or similar under the Goldpath. It is essential the base should be free draining and porous, ensuring no water is held directly under the surface of the Goldpath. The foundation should be compacted to incorporate all pits and falls using a roller not weighing less than 1.5 tonnes, to provide a flat level surface. This surface needs to be dry before laying the Goldpath.

Spread - The back of a rake or flat board should be used to level and spread the Goldpath to a depth of approximately 75mm to achieve a compacted thickness of 50mm for footpaths, and 125mm to achieve a compacted thickness of 100mm for vehicular paths. We recommend that timber edging be used to receive the Goldpath.

Rolling Stage 1 (Dry) - The surface is then rolled **DRY** with the roller set to its **MAXIMUM VIBRATION** and compacted to the required finish levels. We recommend a roller not weighing less than 1.5 tonnes for footpaths and 2 tonnes for driveways and car parks. If patchy areas appear, fines can be sieved from the surplus heap, scattered onto affected areas and re-rolled to provide a smooth level surface. Once a flat and uniform surface at the required depth has been achieved, the next stage can be undertaken.

Rolling Stage 2 (Wet) - Water should be sprinkled directly onto the roller continually throughout this process, **NEVER** onto the surface of the Goldpath as this washes out the fines and minimises or eliminates the products natural self-binding properties. **The roller vibrations should be OFF** in order to float the product fines to the surface, a fundamental process in ensuring the product binds together and sets sufficiently. The wet rolling should continue until a smooth even surface is achieved. A soft wide broom can be used to remove any lines or grooves in the gravel left by the roller. The product must be left to dry for at least 48 hours. Avoid laying the product during extremely cold or frosty conditions, or if heavy rain is forecast within 3-4 days of installation. We do not recommend using Goldpath on inclines greater than 1:15.

Long Rake Spar Co Ltd

Youlgrave, Nr Bakewell, Derbyshire, DE45 1LW

Tel: 01629 636210 Fax: 01629 636247

Email: sales@longrakespar.co.uk

Web: www.longrakespar.co.uk